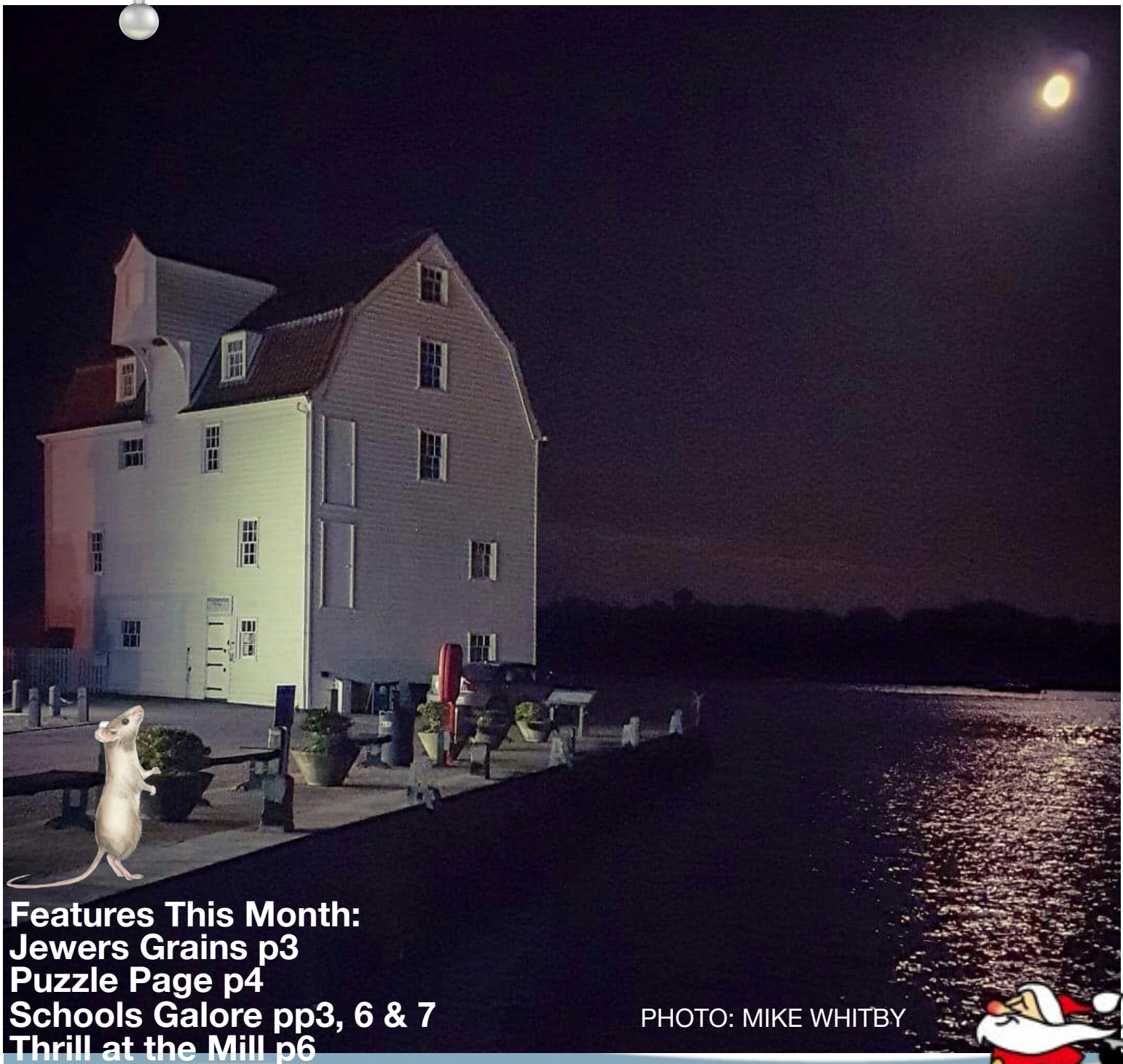


THE TIDE MILL

LIVING MUSEUM

Patrons of the Tide Mill: Lord & Lady Framlingham



Features This Month:
Jewers Grains p3
Puzzle Page p4
Schools Galore pp3, 6 & 7
Thrill at the Mill p6

PHOTO: MIKE WHITBY





EDITORIAL

As this column is being written, your editor is sitting at the dining table of his grandson in Ilkeston, Derbyshire, looking at and listening to the driving rain outside the window - fortunately outside the window! Yesterday was dry in the sky but sodden underfoot (and over foot if ones foot was not carefully placed!). They have had it bad up here - 'up' being in respect to those of us who live in or around Woodbridge. And it seems 'bad' is what they are going to continue to get.

So, "What has all this got to do with Woodbridge Tide Mill?" I hear you cry. Well, nothing. The kind reader will recognise that a good editor is always at pains to find something relevant, interesting and, if possible, entertaining to say to his reader, even in a newsletter, but he does not always succeed. And this is one of those rare occasions when this editor has failed to find anything either relevant, interesting or, for sure, entertaining to say. He has just waffled on to fill the column, with pity in his heart for those of you who could not avoid reading it.

But, to grasp at relevance: Merry Christmas and a Happy New Year from your entire editorial team.

Ed.

WTMeditor@gmx.com

VIEW FROM THE BRIDGE

We have had a great year at the Tide Mill welcoming many more visitors and testing new things to enhance the Tide Mill as a place to visit. We are now only open for milling - see our website for details - and will reopen full time at the end of March. We will use the winter to plan more events for the Tide Mill in 2020. If you want to join us in our planning and as a volunteer do let us know.

We have a great team of volunteers and I must thank them for bringing the Tide Mill alive so successfully.

My very best wishes for a Happy Christmas and Healthy New Year.

John Carrington

Chair, Woodbridge Tide Mill Charitable Trust



[Those of you who are alert, or even those who look at our newsletter, may notice that we are now called Woodbridge Tide Mill Museum, with a new logo, which your editor has failed to keep up with. More about this in the New Year edition. Ed.]

CONTACT US

Here are live links to send emails to the contacts needed for those readers who want to contribute to the life of Woodbridge Tide Mill by volunteering for one or more of the various interesting, and fun, jobs that need doing...

If you want to put something in the newsletter (or comment on it):

Ed.

If you want to be a Guide:
Wendy

If you want to be a Miller:
Dan

If you want to be a Flour Bagger:
Bob

If you want to be a Warden:
Dan

If you want to be an Engineer:
John W

If you want to be an Leafleter:
Bob or John W

If you want to help with Marketing:
Simon

If you want to help with something we have not thought of:
Bob

If you would like to contribute to our Collection or Archive:
Fraser

If you want to contact our Chair of Trustees:
John C

If you want to be a Friend of Woodbridge Tide Mill:
Be A Friend

EDUCATION AT THE TIDE MILL



IF IT'S TRUE THAT WE LEARN FROM OUR MISTAKES, THEN SOME OF US HERE ARE GOING TO GET A GREAT EDUCATION!

Christmas nuts are fruitcakes.

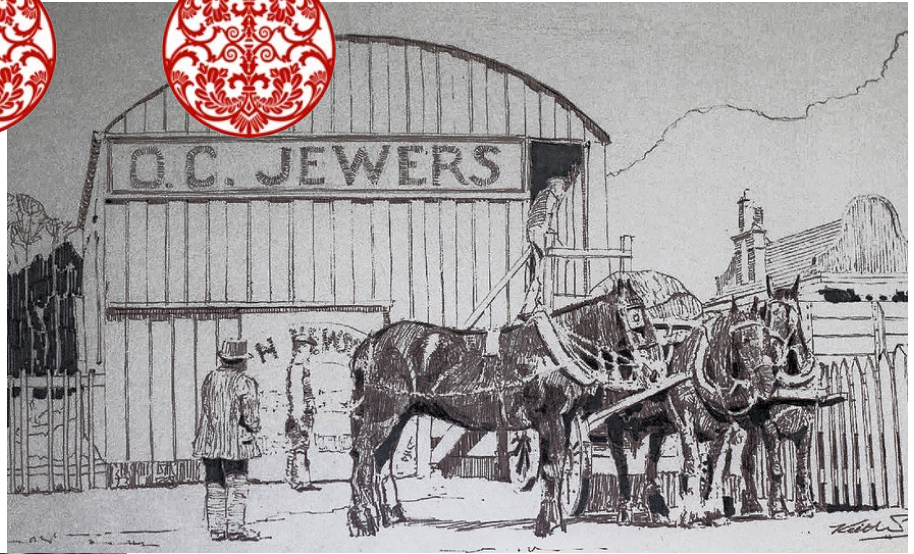


www.woodbridgetidemill.org.uk



Last month we did not have an article in our 'Keeping Flour Alive At ...' series, learning instead about early tide mills, so, this being the bumper Christmas issue, your editor decided it would be a good idea to do the same this month. No, not to learn about early tide mills, as you now know all about them, but to do something different.

The 'different' thing is to find out where the grain comes from that is used by our lovely millers to produce our lovely flours. But I can't find out where it comes from, as that changes. What I can tell you is that it is supplied to us by the leading grain merchant in the UK and that they ensure that we only get locally grown wheat. The only air-miles involved are when you smuggle it abroad as gifts for your foreign friends - to make them envious of our access to such stuff. So, here we go...



Since 2012, Woodbridge Tide Mill has been buying its wheat grain from **Jewellers Grains**, at Woolpit, Suffolk. The grain we use is a hard red wheat, developed in the US and Canada but grown in East Anglia. It is a high protein grain (for the aficionados among you: 15-17%, high hagburg falling number (300 – 400) and high kilo weight (80-85) – which doesn't mean a great deal to your editor) which enables us to produce a strong flour with excellent baking characteristics. As you know already.

Jewellers are proud to have traded with several generations of the same East Anglian farming families over the past 150 years. Some customers have used their hand-written ledgers to trace back their partnership with this family business, viewing deals done between grandparents or even great grandparents as far back as the 19th century. Today their values and commitment to quality customer service are the same as when John Cocks founded the business in 1865.



Five years later his brother in law joined him to become Cocks and Newson. In 1886 Oliver Clover Jewellers joined his father-in-law as an apprentice and in 1891, after the death of John Cocks, Oliver Jewellers took over the business. In 1930 Edward Jewellers joined the business and in 1950 a limited company was formed. In 1961 Clive Jewellers joined, followed by his son Matthew in 1998.



Matthew took over the business in 2005, and has since led a significant investment in technology and capacity.

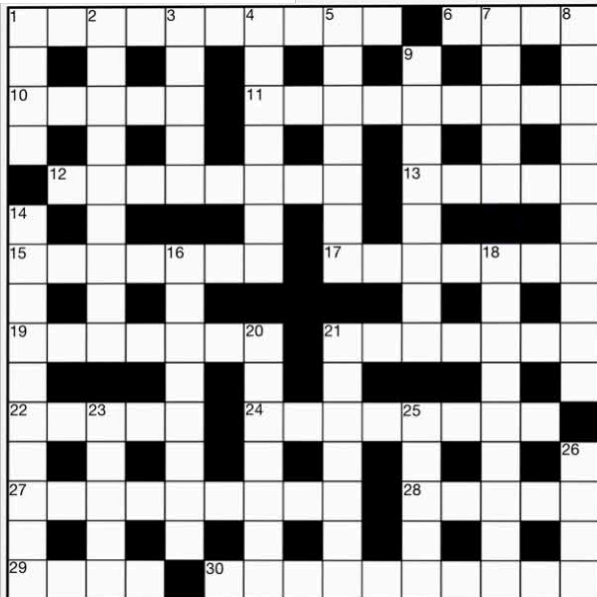
[The founder and the current CEO shown, but you can find the others on Jewellers' website.]

In 2005 the company moved to a splendid new facility at Woolpit on the A14, with state of the art cleaning and drying equipment, plus grain storage for over 20,000 tonnes. [Not the above image!]. Jewellers continue to invest heavily into the Woolpit site to meet growing demand for faster processing and more specialist services to increase grain quality - such as colour sorting. Today, Jewellers provides customers with one of the fastest, most flexible, cost effective grain processing solutions in the UK.

For full details of Jewellers Grain's services, please go to their website: <http://www.jewellersgrain.co.uk>

[If this article sounds just like a big advertisement, then perhaps that is no bad thing, as we want them to prosper and to continue to supply us with superb locally grown grain. Ed.]





ACROSS

1. Home waters. (5,5)
6. Avena sativa. (4)
10. Extra large? (5)
11. Fit odd row into sailor's hazard. (9)
12. Nemo? (8)
13. Cheap Indian cigar. (5)
15. A wind must be. (7)
17. Reliefs from peaks. (7)
19. Sounds like a reduction for learning. (7)
21. Fir bone can be made to burn well. (7)
22. Kin in wedlock. (5)
24. Plug this in to get illuminated from below. (8)
27. Innately. (9)
28. Welcome on cakes, not on rigging. (5)
29. Sounds as if a rowing team turns into a river island. (4)
30. How our millers deservedly produce their flours. (10)

DOWN

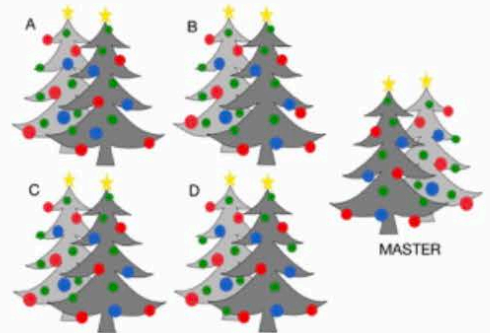
1. Deer moves into riverside vegetation. (4)
2. The best things to have in Woodbridge. (9)
3. A schoolchild's favourite monarch. (5)
4. Whirlpooling. (7)
5. Nickname. (7)
7. Cherish. (5)
8. Suisse dies to make peripheral points. (4,6)
9. Dogged. (8)
14. Ideal qualification for Tide Mill helper. (10)
16. Pressing? (8)
18. Just what we are all Friends of. (9)
20. Rower of a light narrow boat. (7)
21. Situation of a running rope, fixed. (7)
23. Short for one Tide Mill benefactor. (5)
25. Surprise, when it is "Good...!" (5)
26. Non PC adjective. (4)



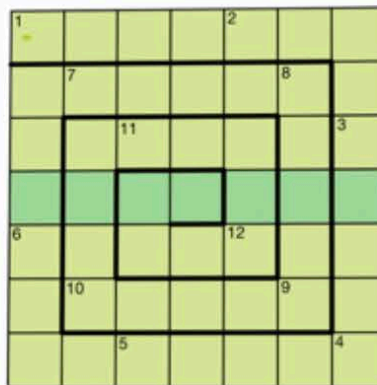
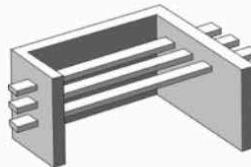
SPOT THE TEN DIFFERENCES



FIND THE MATCHING MIRROR IMAGE



JUST FOR FUN



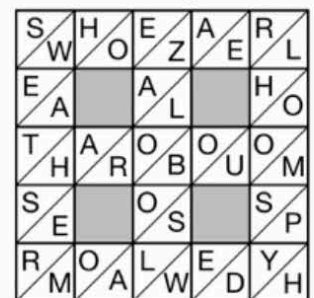
WORD SPIRAL

- Clues:
- 1 Cereal
 - 2 Of navy
 - 3 Hang
 - 4 Attire
 - 5 Dance
 - 6 Frequently
 - 7 Potion
 - 8 Fastener
 - 9 Shorebird
 - 10 Cook
 - 11 Cards
 - 12 Pamphlet

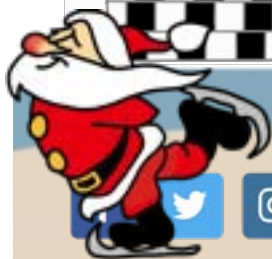
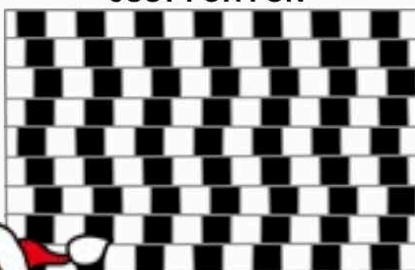
Keyword: Plant

SPLIT DECISION

Reveal the hidden words by deleting one letter in each divided square.



JUST FOR FUN



CURATOR'S CORUSCATIONS
By Fraser Hale

Home Is Where the Art Is

Early in November I attended a training course. Not an unusual event at present, I'm trying to take full advantage of the excellent training and development opportunities offered by national and regional museum support organisations such as AIM, SHARE and GEM. This particular course was an excellent example of that support; the training, run by Arts Council England, normally costs £160.00 to attend. SHARE Museums East, however, had provided funding for about a dozen delegates to attend free of charge.

The aim of the course was to certificate the delegates as "Advisors" within the Arts Council's "Arts Award" scheme. This multi-level programme aims to offer children and young people a structured, yet informal, route into the broad range of benefits offered by interaction with art and

heritage. Being an Advisor means that a museum can run an accredited course for children who earn certificates for their attendance and learning.

It turned out, though, that the course was much more than a case of familiarisation with a set of guidelines and procedures. Led by a



practicing artist, the day opened up a whole new understanding for me as to how we all think about art (in all its forms) and how thinking differently about it can alter the way that we think, and draw inspiration and

memories from, many other aspects of our lives – including museum visits.

My intention, now, is to put together an Arts Award Discovery Day programme. This will allow us to lead children through the initial stage of the scheme in just one, immersive, interactive day at the Tide Mill. I hope to be able to offer the first of these days in the Spring Half-term.

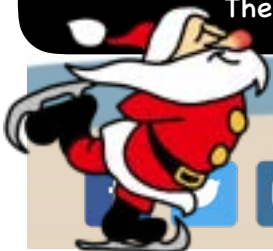
As the Tide Mill approaches its 850th birthday we continue to build on the sound foundations laid over the last 10 years by the work of the trustees, volunteers and friends. Looking to the future we aim to diversify the museum's audience, and to offer them ever richer and more rewarding experiences.

BUSKER'S CORNER

Dark! So dark I can't see my nose,
Cold! So cold I fear I have froze,
Lonely! So lonely I've forgot how to talk,
Stiff! So stiff it's a struggle to walk,
Ah! Here comes the daylight, such utter relief!
I must hit the road, with a stretch and a heave,
I gather my things up, and check nothing's left,
I think I'll go uptown, the prospect is best,
But first a good scratch, get rid of the itching,
Then leave this shop doorway and find the soup kitchen.



WHAT IS THIS, AND WHAT DOES IT DO?
Answer on last page





Woodbridge Tide Mill Museum, along with the talented, local AmDram group 'The Company of Four' are celebrating the success of the recent 'Thrill at the Mill' events, hosted at the Tide Mill during Halloween on 31st October and 1st November.

The events, which raised funds for the upkeep of the Tide Mill, entertained guests with the transformation of the Mill as it became the stage for a selection of haunting characters inspired by the it's grizzly history.

Tide Mill's Chairman of Trustees, John Carrington says, "With the 850th anniversary of Woodbridge Tide Mill Museum approaching next year, I was thrilled to see the local community come and support this historic landmark. We've got such an integral piece of British history right here on our doorstep, so we're happy that the money raised can keep the legacy going for years to come."

Lily Griffiths from Company Four says of these events, "The Company of Four are delighted to have been a part of this and can't wait to continue to grow this event in years to come. It was a joy to bring some of Mill's haunted history to life and will be introducing even more surprises next year."

Woodbridge Tide Mill Museum hosts a variety of events throughout the year; one of which you will be sorry to miss is just over there →



Here's a bunch of youngsters from Melton Primary School



Never catch snowflakes with your tongue until all the birds have gone south for the winter.

ENGINEERING GAZETTE

(Gone fishin', or something)

What a pleasure to welcome Trimley St Martin Primary School to the Tide Mill and show them flour being made the traditional way using the power of the tide. The excited pupils saw, heard and tasted the experience and even helped us find the mice hidden in the Mill! If your school would like to visit get in touch enquiries.woodbridgetidemill@gmail.com



On the right we have a collection of photographs from a recent successful visit to Woodbridge Tide Mill by Abbey School



THE MILLER'S CHRONICLE

By Dan Tarrant-Willis

As the summer season comes to an end and we enter the slower winter season we are tidying up loose ends and getting things done that we have been too busy to get around to. This morning, as we have enough flour already bagged, we sat down and worked on our mill rota/calendar system that ensures that we are all at the mill at the right time and that others know where we are and what we are doing. Compiling the mill rota for next year is time consuming, yet it's well worth the initial effort and ensures every one will be able to plan and complete their chosen tasks without us being on top of each other. Compiling next years rota is a lot more straightforward than it was for this year as we now

have a working system in place. The rota encompasses everything that is planned and it is constantly updated, both in hard copy at the mill and in real time on Google Drive, as new events and school trips, etc., or extra milling sessions are needed as the year commences. Although it was originally a rota just for the milling sessions and demos we have extended it to cover all aspects of the mill's function except the bagging sessions.

These are run independently by Brian on Tuesdays and Bob on Thursdays. If you would like to be sent the link to the rota on Google Drive please let me know and I will include your name on the list of recipients. dantarrantwillis@yahoo.com

This year's production of our super flour to date is 5,576.21 kg.
(12,293 $\frac{3}{8}$ lb Ed.)





SCHOOL REPORT by Heather Sheehan

This month we've been incredibly busy with school visits. Five different classes of children have been welcomed through our doors, a record number for just one month! At the beginning of the November we showed children from Melton Primary School around,

this was swiftly followed by Woodbridge School pupils who came to learn more about their local area and just this week we've had visits from two classes at Trimley St Martin Primary School.

The visits were great fun. It's always fantastic to watch children's eyes light up as the wheel begins to turn. The action doesn't stop there, as next week [written on 21 Nov] we will welcome a group from St Mary's Primary to come and quite literally 'take over' the mill as part of the Kids In Museums 'Takeover Day'.

We will also see out the year with two more school visits and if that wasn't enough we're holding a Christmas Craft Morning on December 30th. Parents and their kids can come and clear away the cobwebs and join us in some recycling themed craftiness! We'll be creating cool things from used wrapping paper and offering hot chocolates and mince pies to keep the festivities going.

Diary Dates

Wheel Turning and Milling Demonstrations

Water Powered Milling Demonstrations will take place in December at 09:00 on the 2nd, at 15:30 on the 11th, and at 14:00 on the 22nd.

Water powered wheel turning only will take place at 15:30 on the 26th.

WARDENS' DIGEST

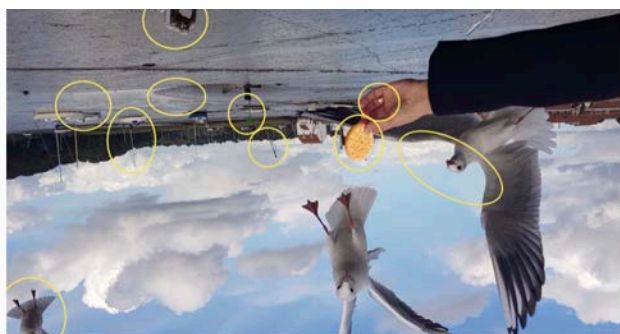
When there's no wardening to be done, there's no writing about it, either.
Simples!

For full general mill working times use this link to the website: [Turning & Milling](#)

Correspondents: all copy for next month to be sent to WTMeditor@gmx.com by the middle of January please.

CHRISTMAS PUZZLE PAGE

ANSWERS



C is the matching image



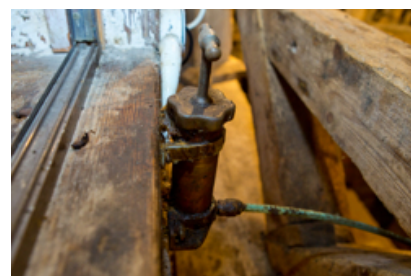
WORD SPIRAL
1 Grain, 2 Naval, 3 Lynch, 4 Habit, 5 Tango, 6 Offen, 7 Negus, 8 Screw, 9 Wader, 10 Roast, 11 Tart, 12 Tract
Keyword: Factory

Did You Have A Good Visit?

If you enjoyed your visit to Woodbridge Tide Mill recently, or in the past, please let everyone know so that they can share experience your enjoyment by posting a message on [tripadvisor](#)



WHAT IS IT? ANSWER



The inner horizontal shaft bearing greaser.
This is the greaser which you can see through the pit window. This greaser, when operated, supplies grease to the inner shaft bearing.



Santa has been banned from driving his sleigh this year for elf and safety reasons.
www.woodbridgetidemill.org.uk

